

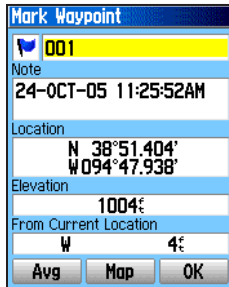
Marking a Waypoint

To mark your current location:

1. Press and hold **Enter** to open the Mark Waypoint Page.
2. To accept the waypoint with the default information, highlight **OK**, and press **Enter**.

OR

To change any information on the Mark Waypoint Page, highlight the appropriate field, and press **Enter** to open the on-screen keypad. After entering and confirming your changes, highlight **OK**, and press **Enter**.



To create a new waypoint using the Map Page:

1. Open the Map Page, and use the **Rocker** to move the pointer (⏶) to the map item you want to mark as a waypoint.

2. Press and quickly release **Enter** to capture the pointer location.

If you highlighted a map feature, an information page appears. Highlight **Save**, and press **Enter** to save the item as a waypoint.

OR

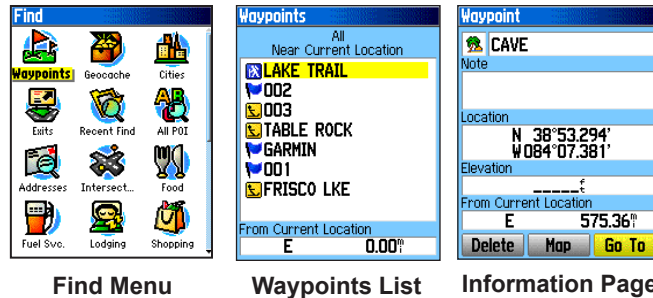
If the map item selected contains no information, a "No map information at this point. Do you want to create a user waypoint here?" message appears. Highlight **Yes**, and press **Enter**.



Finding Map Items

To find an item from your current location:

1. Press and hold the **Menu** key to open the Find Menu.
2. Highlight a category icon (**Waypoints**, **Cities**, **Exits**, for example), and press **Enter**.
3. Use the **Rocker** to highlight an item, and press **Enter** to open the information page for the selected item.



NOTE: For the Find Menu to display all of the categories shown above, MapSource detailed map data must be downloaded to the microSD™ or TransFlash™ card. (Refer to the owner's manual for detailed information.)

To find an item from another location using the Find Menu:

1. Press the **Find** key to open the Find Menu.
2. Highlight a category icon (**Waypoints**, **Cities**, **Exits**, for example), and press **Enter**.
3. Press the **Menu** key to open the Options Menu.
4. Highlight **Change Reference**, and press **Enter**.
5. Use the **Rocker** to select a reference point on the map, and press **Enter**. The list changes to show items nearest to the new map location.

Going to a Destination

To Go To a highlighted map item:

1. Use the **Rocker** to highlight the item you want to navigate to on the Map Page.
2. Press and quickly release **Enter** to capture the pointer location (⏶) and open the information page.
3. Highlight **Go To**, and press **Enter** to begin navigation.
4. Follow the magenta route created on the Map Page. You can also use the Compass Page to help you navigate to the point.

To initiate a Go To from the Find Menu:

1. Press the **Find** key to open the Find Menu.
2. Highlight the **Waypoint** icon, and press **Enter** to open the Waypoints Page.
3. Use the **Rocker** to select a waypoint, and press **Enter**. The Waypoint Page opens.
4. Highlight **Go To**, and press **Enter** to begin navigation.

To go to a recently found item:

1. Press the **Find** key to open the Find Menu.
2. Highlight the **Recent Finds** icon, and press **Enter** to open the Recent Finds Page.
3. Use the **Rocker** to select an item to go to, and press **Enter** to open the information page for the item.
4. Highlight **Go To**, and press **Enter** to begin navigation.



eTrex® Legend Cx

personal navigator®

quick reference guide



Using the Keypad



Power/Backlight key—press and hold to turn the unit on or off. Press and release to adjust the backlighting, view the date or time, and view the battery capacity.



In/Out Zoom keys—from the Map Page, press to zoom in or out. From any other page, press to scroll up or down a list.



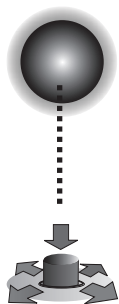
Menu/Find key—press and release to view options for a page. Press twice to view the Main Menu. Press and hold to display the Find Menu.



Quit key—press to cycle through the main pages. Press and release to cancel data entry or exit a page.



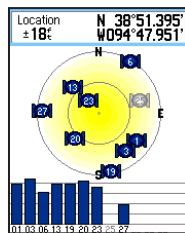
Enter/Rocker key—press and release to enter highlighted options and data or confirm on-screen messages. Press and hold to mark your current location as a waypoint. Move up, down, right, or left to move through lists; highlight fields, on-screen buttons, or icons; enter data; or to move the map panning arrow.



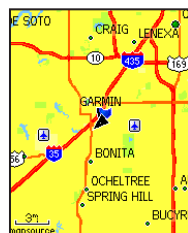
(Press down to Enter. Move to the side or up or down to scroll, move the cursor, or increase or decrease values.)

Main Pages

The eTrex Legend Cx has three recurring main pages and one that displays only with each start-up. Press and release the **Quit** key to cycle through the page sequence.



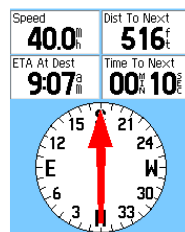
Satellite Page



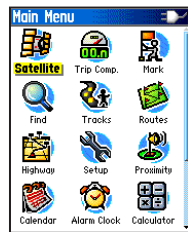
Map Page

Satellite Page—appears only at start-up and shows the GPS receiver status, satellite locations, satellite signal strength, and the receiver's current location.

Map Page—shows a detailed map of the area around your current location.



Compass Page



Main Menu

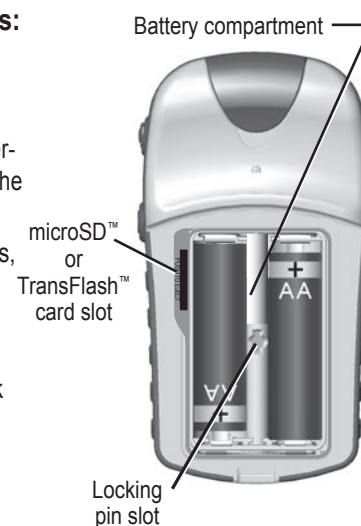
Compass Page—guides you to your destination.

Main Menu—contains advanced features and settings.

Getting Started

To install the batteries:

1. Remove the battery cover from the back of the unit by turning the D-Ring 1/4 turn counter-clockwise and pulling the cover away.
2. Insert two AA batteries, or TransFlash™ card slot.
3. Turn the D-Ring 1/4 turn clockwise to lock the cover in place.



To turn on the eTrex Legend Cx:

1. Press and hold the **Power** key. A tone sounds, and the Introduction Page appears, followed by the Satellite Page. The GPS receiver begins searching for satellite signals. When the receiver has signals from at least three satellites, the display at the top of the page indicates position accuracy and location coordinates.
2. Press the **Quit** key repeatedly until the Map Page appears. You are now ready to begin GPS-aided navigation.

To adjust the backlight level:

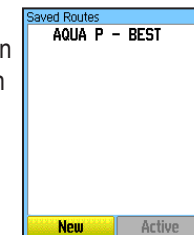
1. Press and quickly release the **Power** key to open the backlight adjustment slider.
2. Press up on the **Rocker** to increase the brightness, or press down to decrease.
3. Press **Enter** or the **Quit** key to close the backlight adjustment window.



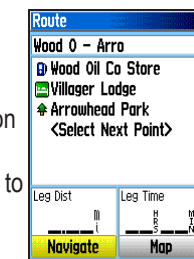
Creating a Route

To create and use a route:

1. Access the Routes Page from the Main Menu. The page has a **New** button, an **Active** button, and space for a list of saved routes.
2. Use the **Rocker** key to highlight the **New** button, and then press **Enter** to display the Route Setup Page.
3. With an empty row (dashed) in the route list highlighted, press **Enter** to display the Find Menu.
4. Use the Find Menu to select a route waypoint from one of the Find Menu map item groups. Display the information page for the selected item, highlight the on-screen **Use** button, and press **Enter** to add it to the route list of via points.
5. To add more via points to your route, repeat the process.
6. When you have completed the route, highlight the **Navigate** button to begin calculation of the route and navigation using the Map Page.
7. Follow the instructions at the top of the Map Page, the magenta route overlay on the map, and turn-by-turn pop-up prompts.
8. To stop navigation at any time, press the **Menu** key, select **Stop Navigation**, and press **Enter**. The route is automatically saved to the Routes List. To resume navigation, return to the Options Menu, select **Resume Navigation**, and press **Enter**.



Routes List



Route Setup



Route on Map